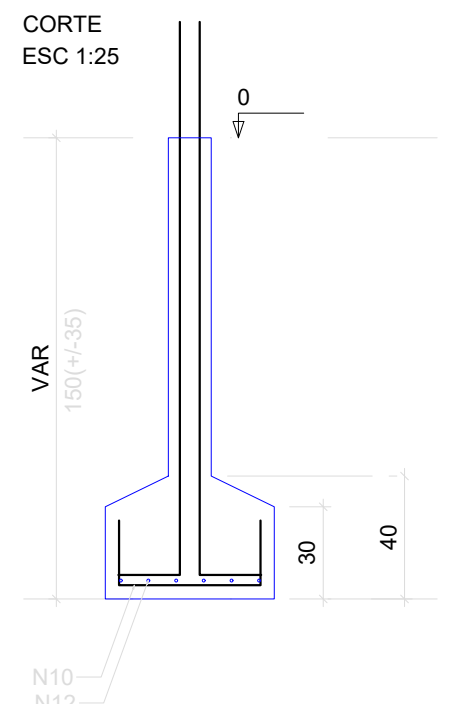
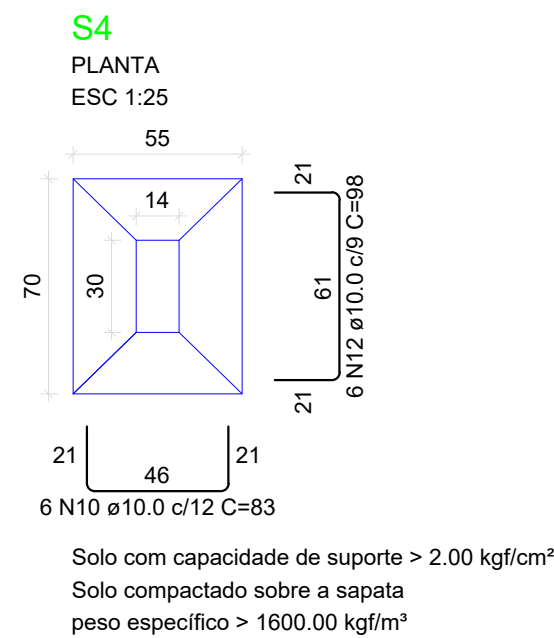
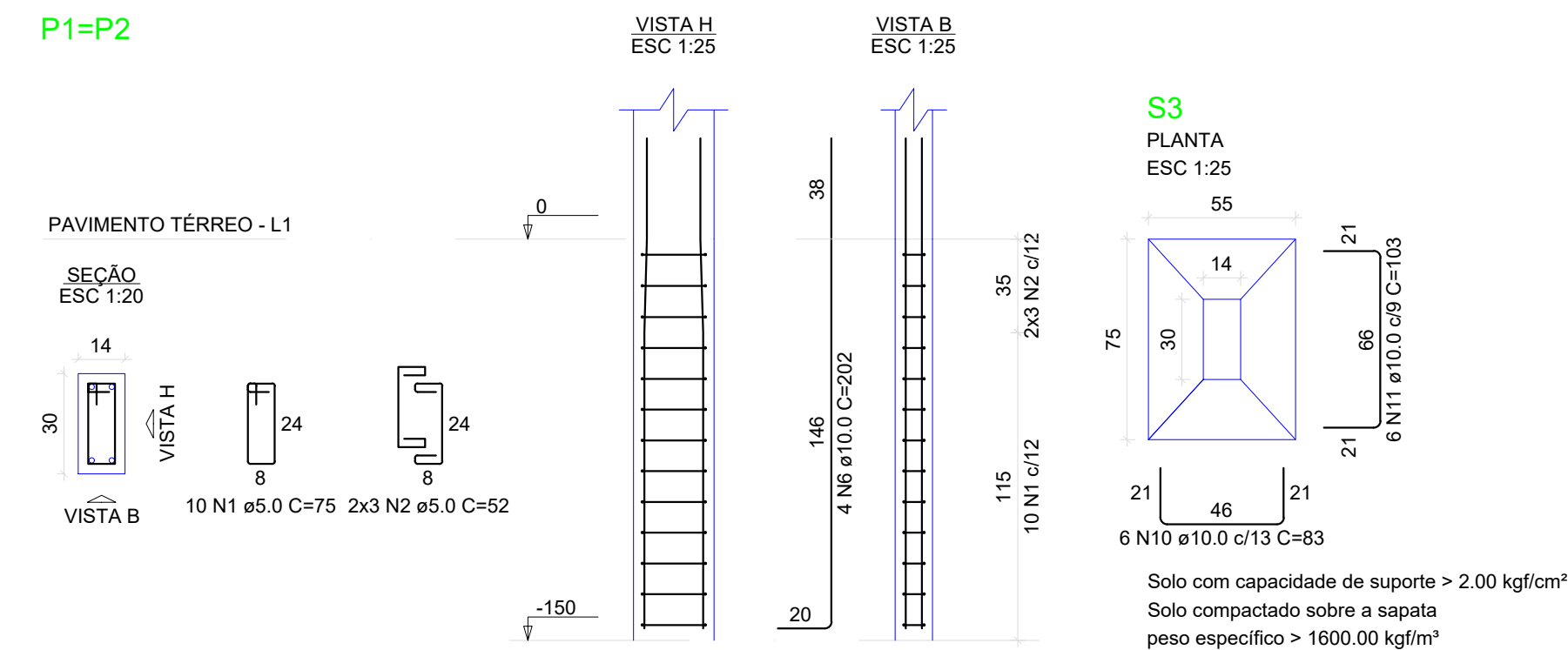
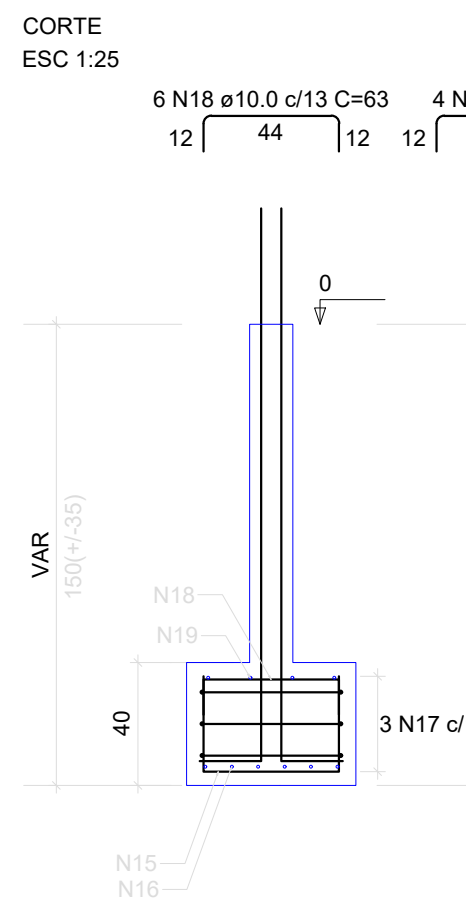
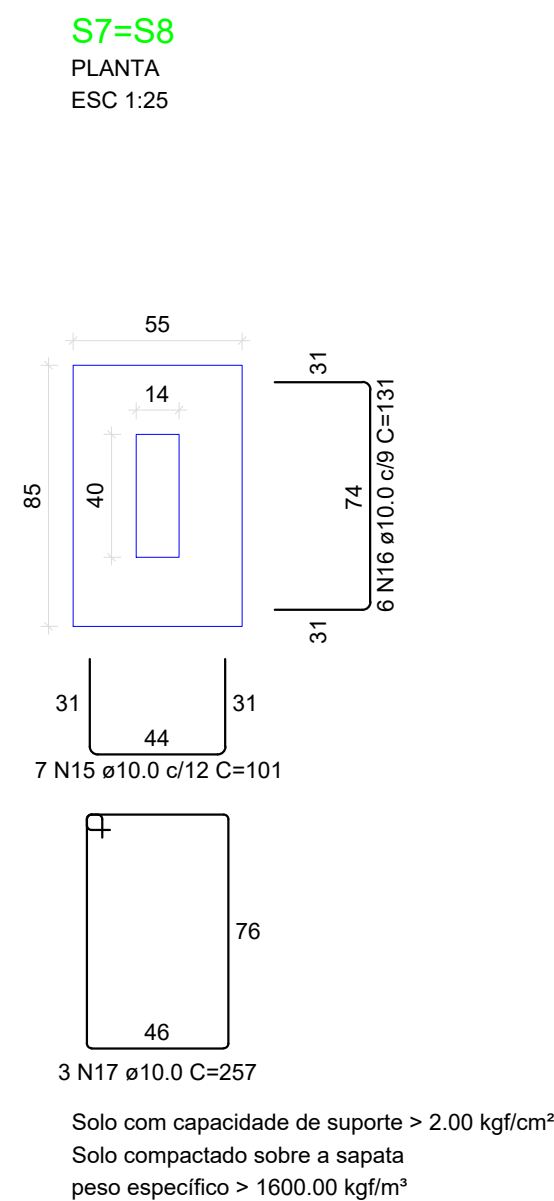
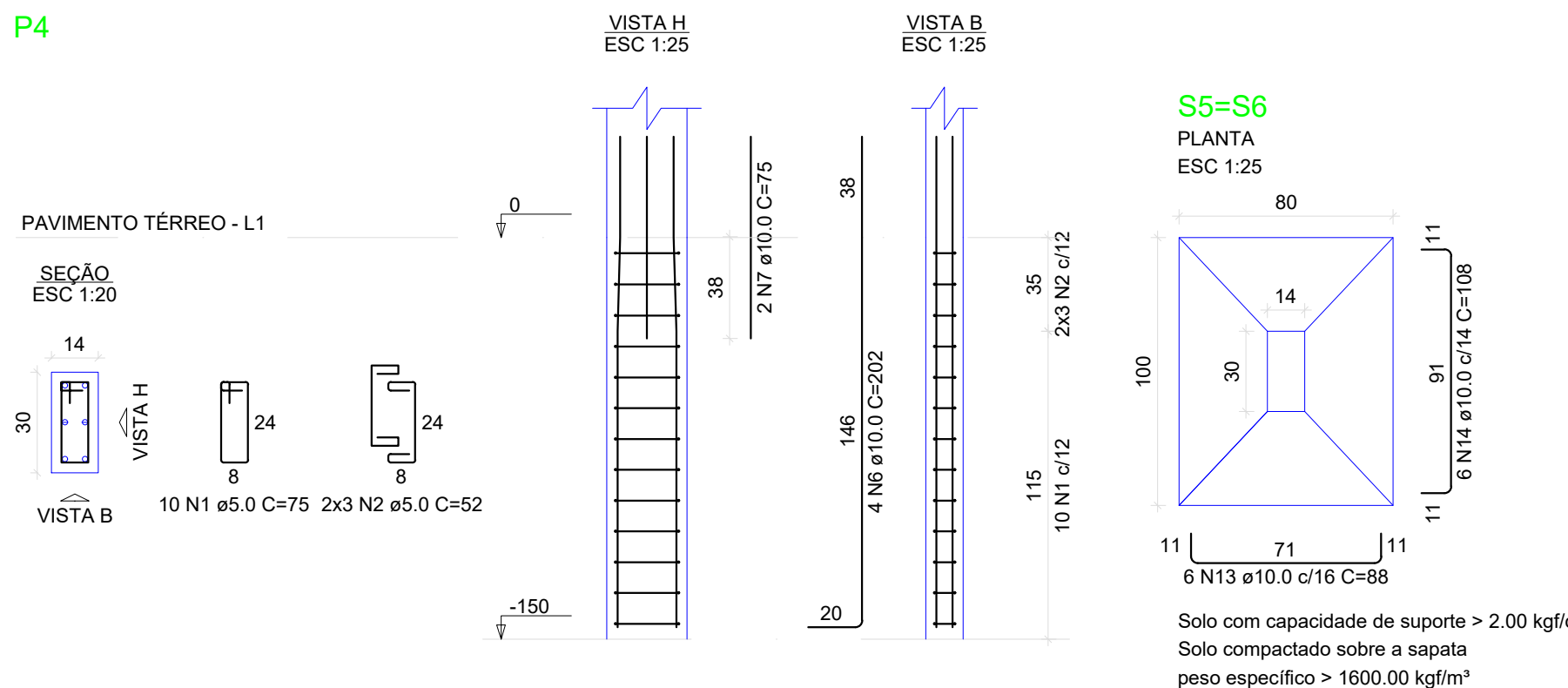


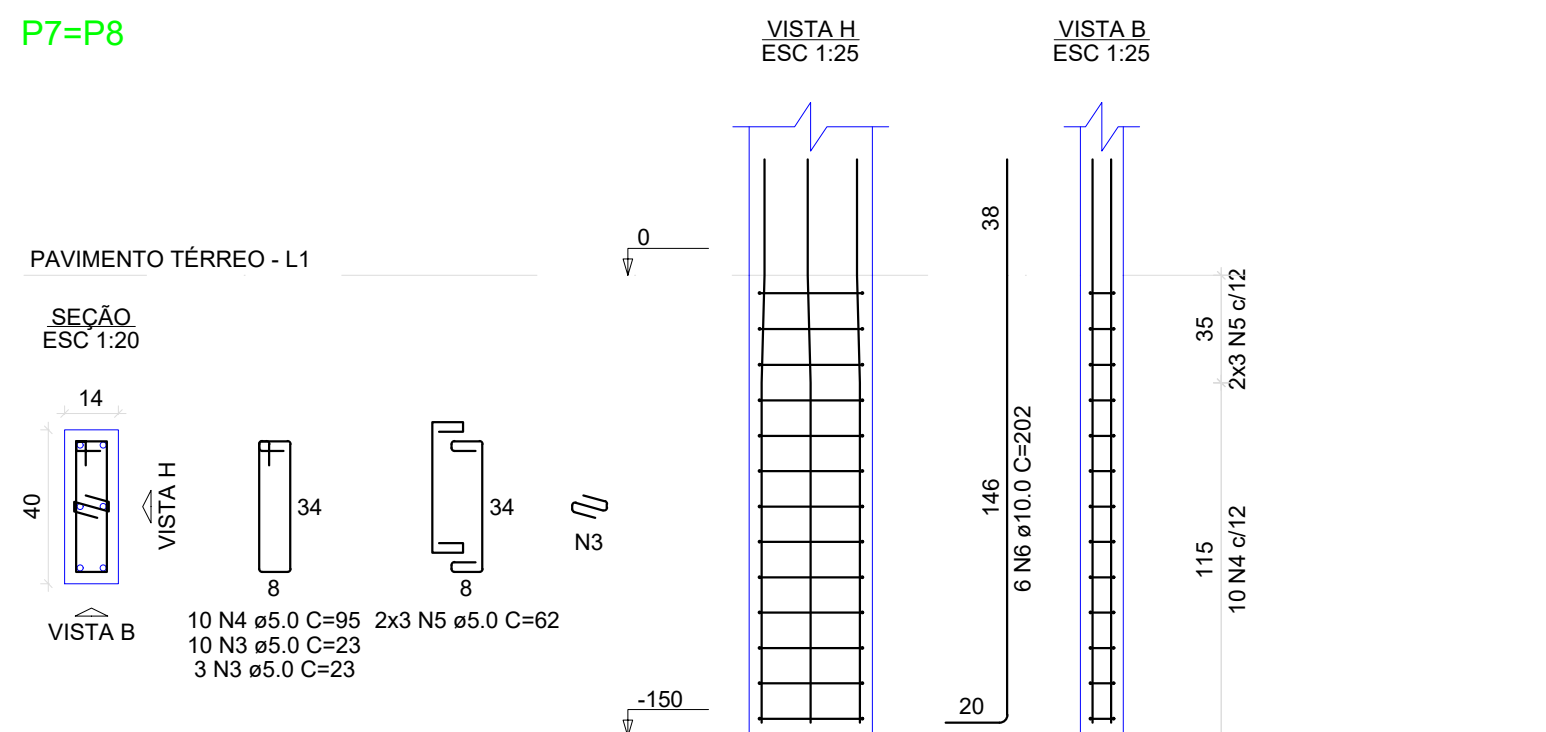
P1=P2



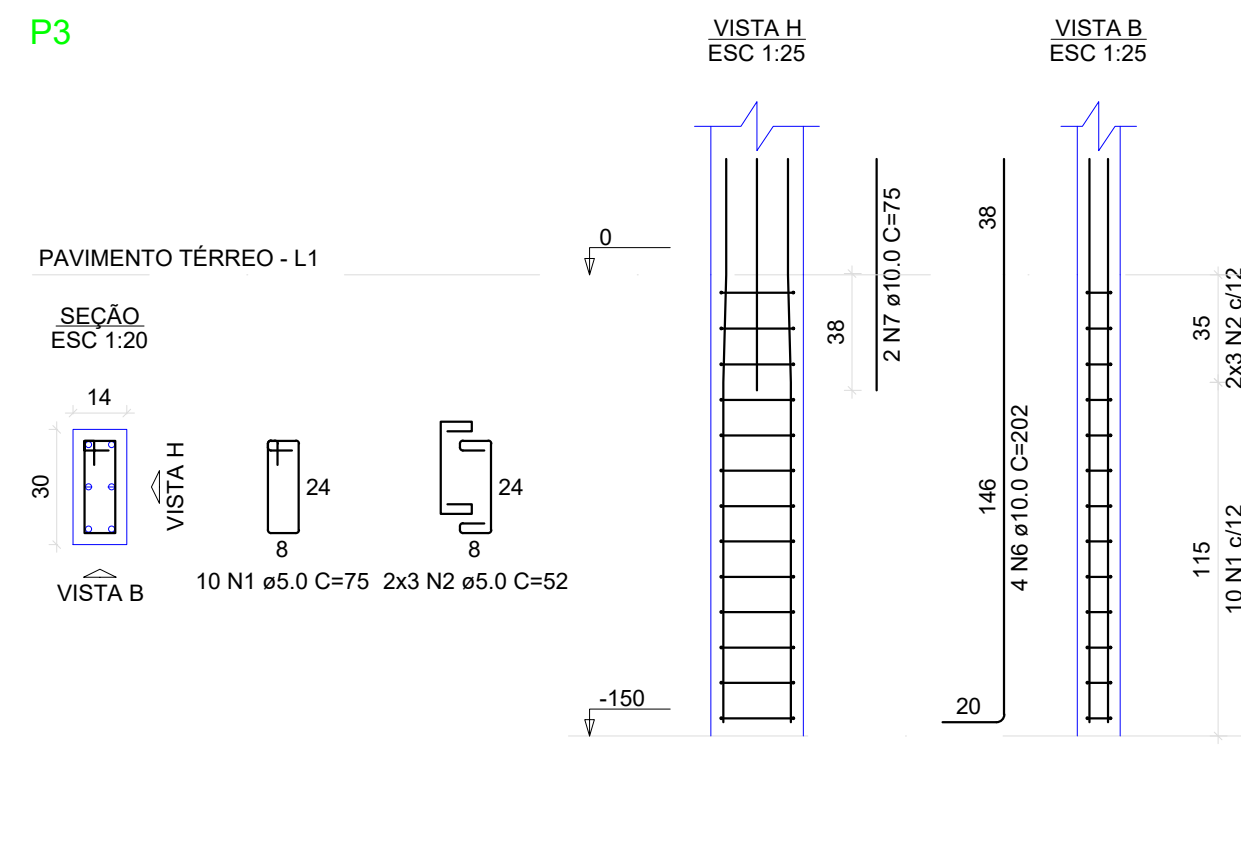
P4



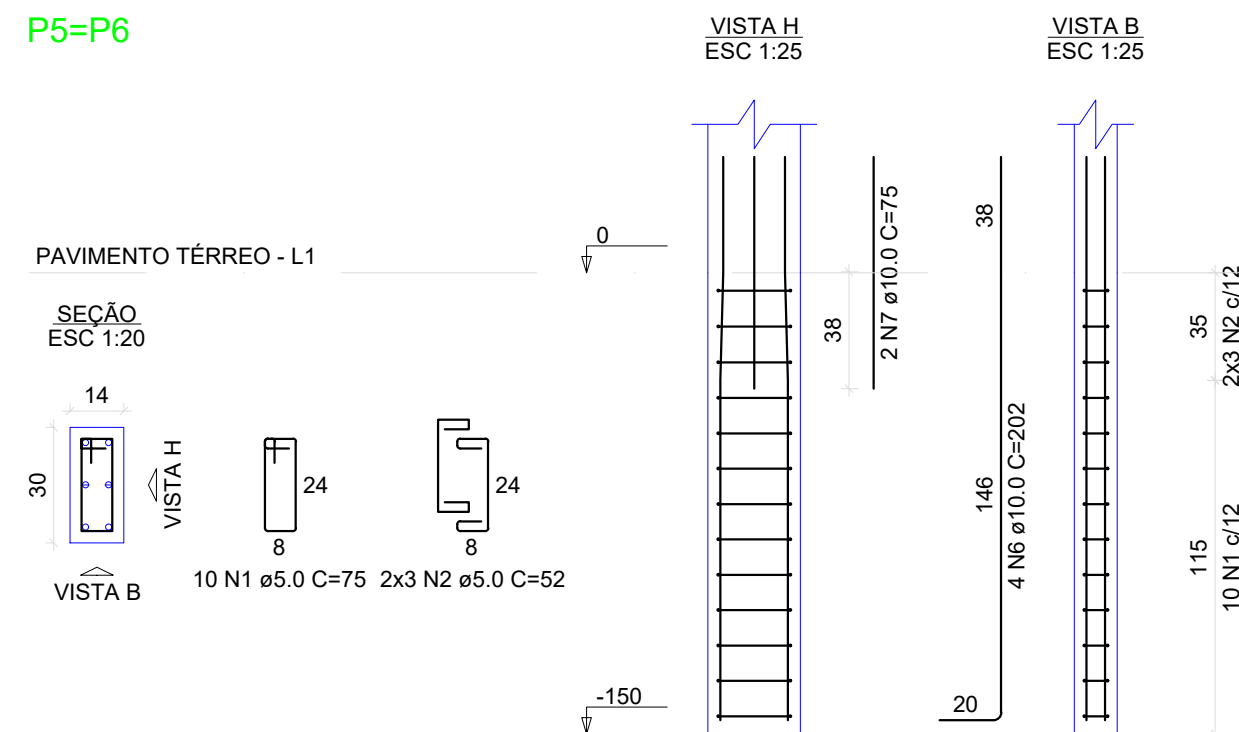
P7=P8



P3

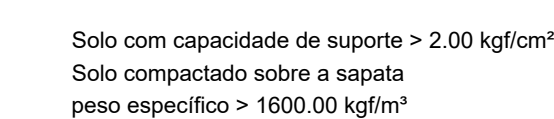
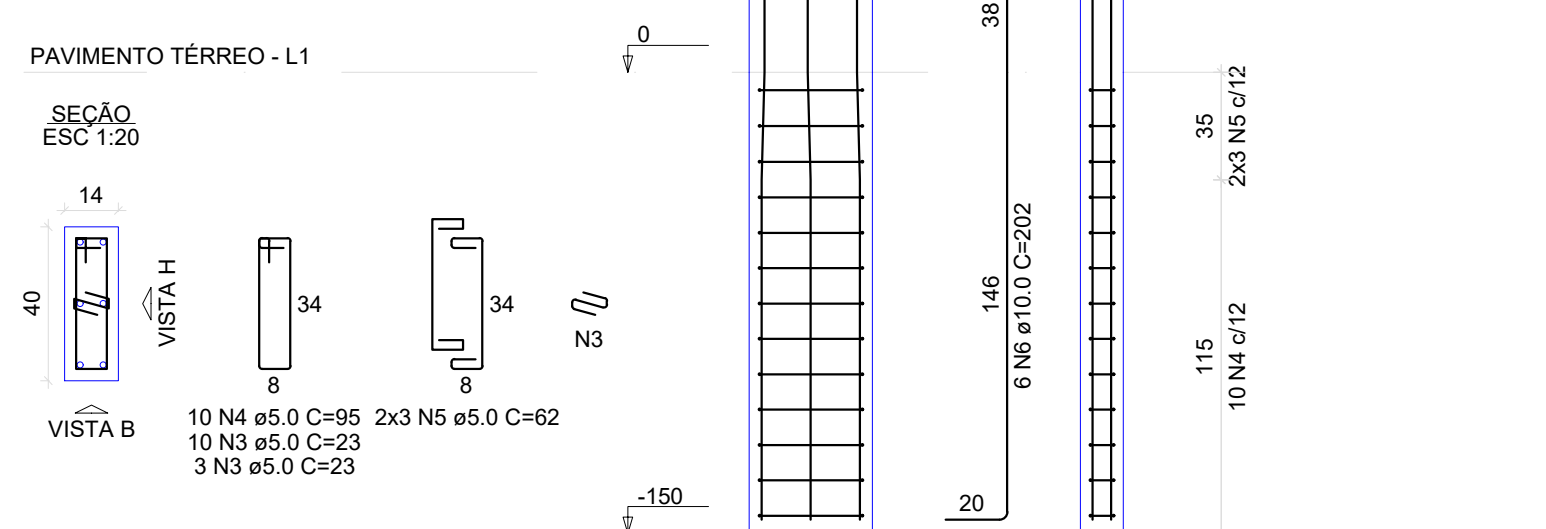
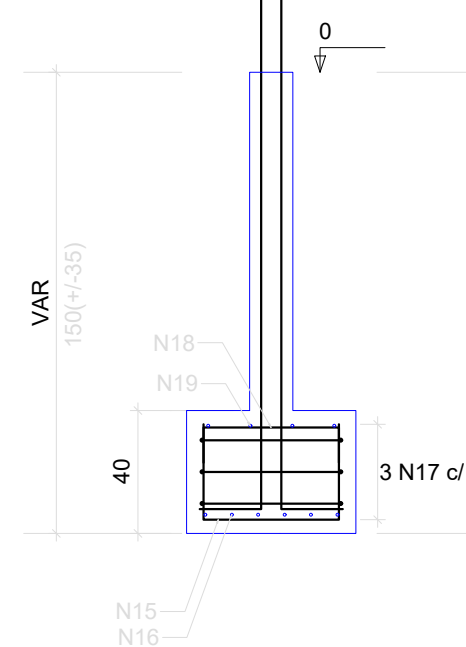
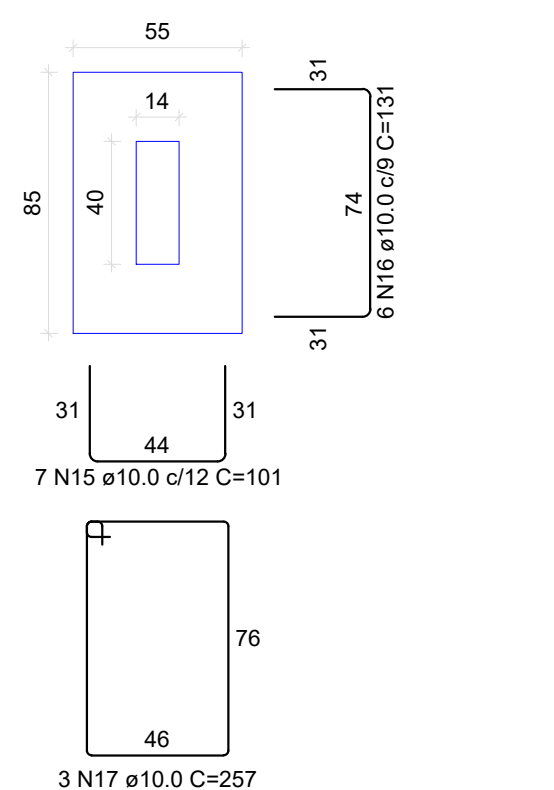


P5=P6



RELAÇÃO DO AÇO					
AÇO	N	DIAM (mm)	QUANT	C.UNIT (cm)	C.TOTAL (cm)
CA60	1	5.0	60	75	4500
	2	5.0	36	52	1872
	3	5.0	26	23	598
	4	5.0	20	95	1900
CA50	5	5.0	12	62	744
	6	10.0	36	202	7272
	7	10.0	8	75	600
	8	10.0	12	83	996
	9	10.0	12	98	1176
	10	10.0	12	83	996
	11	10.0	6	103	618
	12	10.0	6	88	528
	13	10.0	12	88	1056
	14	10.0	12	108	1296
	15	10.0	14	101	1414
	16	10.0	12	131	1572
	17	10.0	6	257	1542
	18	10.0	12	63	756
	19	10.0	8	93	744

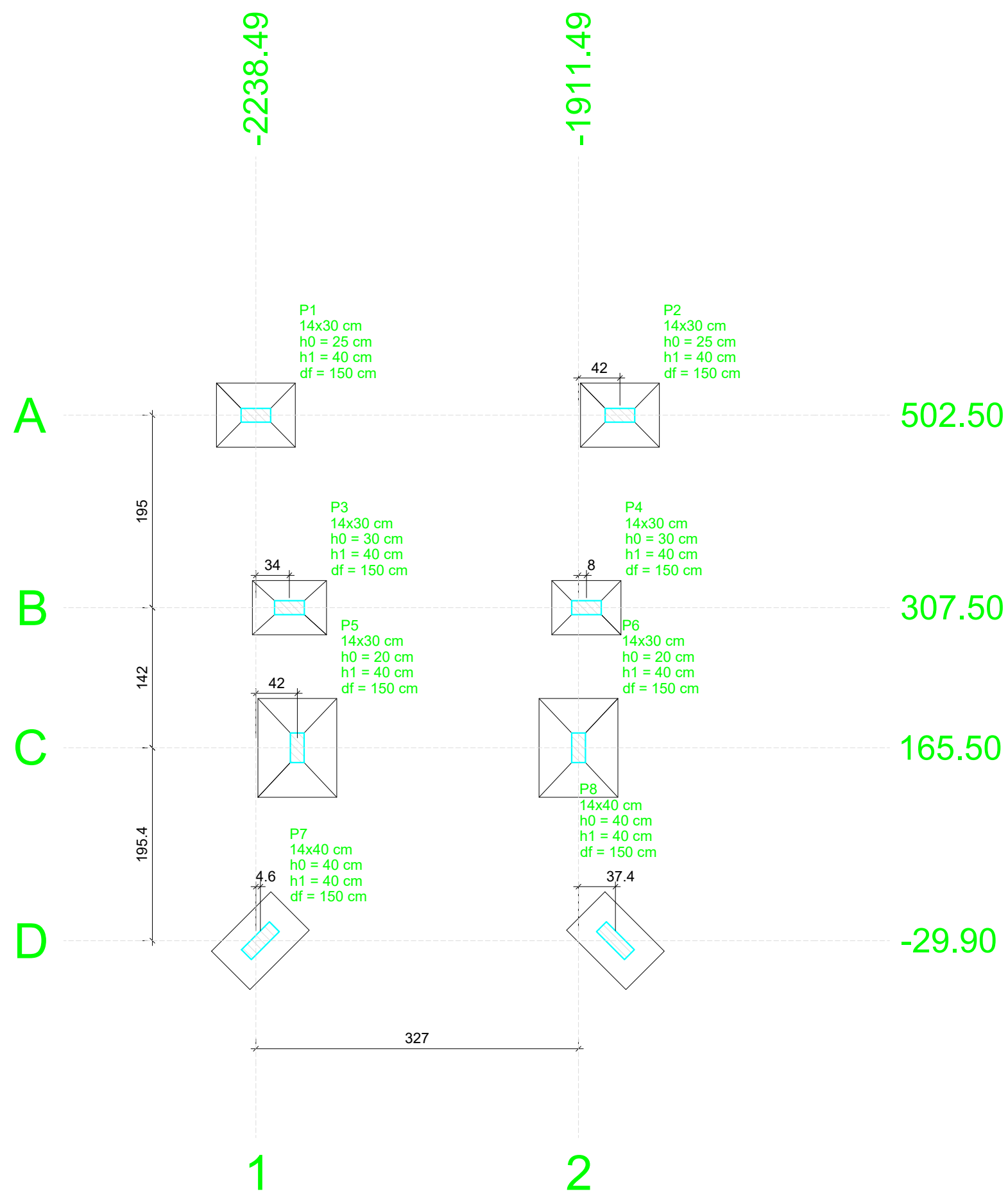
RESUMO DO AÇO			
AÇO	DIAM (mm)	C.TOTAL (m)	PESO + 10% (kg)
CA50	10.0	206.3	139.9
CA60	5.0	96.1	16.3
PESO TOTAL (kg)			
CA50		139.9	
CA60		16.3	
Volume de concreto (C-25) = 1.84 m³			
Área de forma = 14.84 m²			



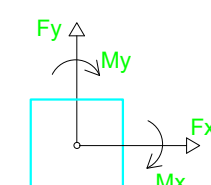
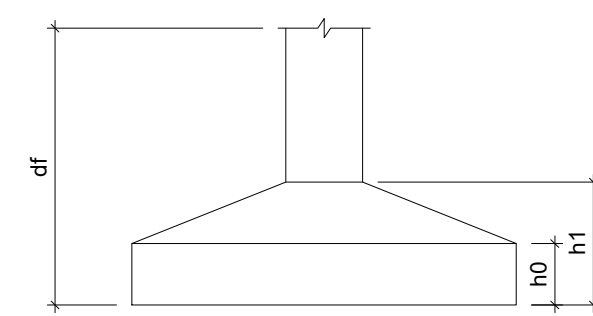
Nome	Seção (cm)	X (cm)	Y (cm)	Carga Máx. (tf)	Carga Mín. (tf)	Pilar				Fundação			
						Mx Máximo (kgf.m)	My Máximo (kgf.m)	Fx Máximo (tf)	Fy Máximo (tf)	Lado B (cm)	Lado H (cm)	h0 / ha (cm)	h1 / hb (cm)
P1	14x30	-2238.49	502.50	6.0	5.4	100	-200	100	-400	0.0	-0.5	0.2	0.0
P2	14x30	-1869.49	502.50	6.0	5.4	100	-200	300	0	0.4	-0.0	0.2	0.0
P3	14x30	-2204.48	307.50	3.8	2.9	100	-100	200	-400	0.0	-0.3	0.2	0.0
P4	14x30	-1903.49	307.50	3.8	2.9	100	-100	300	-100	0.4	0.0	0.2	0.0
P5	14x30	-2196.49	165.50	12.7	10.7	200	-400	0	-100	0.0	-0.3	0.4	-0.2
P6	14x30	-1911.49	165.50	12.7	10.7	200	-400	200	0	0.2	0.0	0.4	-0.2
P7	14x40	-2233.89	-29.90	1.9	1.6	300	0	100	-300	0.0	-0.6	0.0	-0.5
P8	14x40	-1874.08	-29.90	1.9	1.6	300	0	400	0	0.5	0.0	0.0	-0.5

Localização no eixo X	
Coordenadas (cm)	Nome
-2238.49	P1
-2233.89	P2
-2204.48	P3
-2196.49	P5
-2191.49	P6
-1903.49	P4
-1874.08	P8
-1869.49	P2

Localização no eixo Y	
Coordenadas (cm)	Nome
502.50	P1, P2
307.50	P3, P4
165.50	P5, P6
-29.90	P7, P8



Planta de locação
escala 1:50



CIDADE:	SANTA MARIA DA VITÓRIA - BA
ENDEREÇO DA OBRA :	PRAÇA PÚBLICA COM ÁREA DE LAZER
PROPRIETÁRIO:	PREFEITURA MUNICIPAL DE SANTA MARIA DA VITÓRIA
CNPJ:	
RESPONSÁVEL TÉCNICO :	Eng.Antocello Ribeiro Teixeira - CREA-BA: 42370/D
Área da praça: 3888,28m²	Proprietário: PREFEITURA MUNICIPAL DE SANTA MARIA DA VITÓRIA
	Execução:
	Projeto: Eng.Antocello Ribeiro Teixeira - CREA-BA: 42370/D
ESTRUTURAL	
TÍTULO: CONSTRUÇÃO DE PRAÇA	
CONTEÚDO:	FOLHA:
LOCAÇÃO E ARMADURA DAS SAPATAS	01/06
TELEFONE: (77) 99125-0252	ESCALA: IND.
	TIPO DE REQUERIMENTO: OBRA INICIAL
	DESENHO: Antocello
	DATA: MAIO 2026